



ROUND BOX TEMPLATES SCHEMA SCATOLA ROTONDA

ITA: Stampare lo schema su un cartoncino rigido (se utilizzate della carta la grammatura dovrà essere di almeno 250 g per poter garantire un buon risultato)

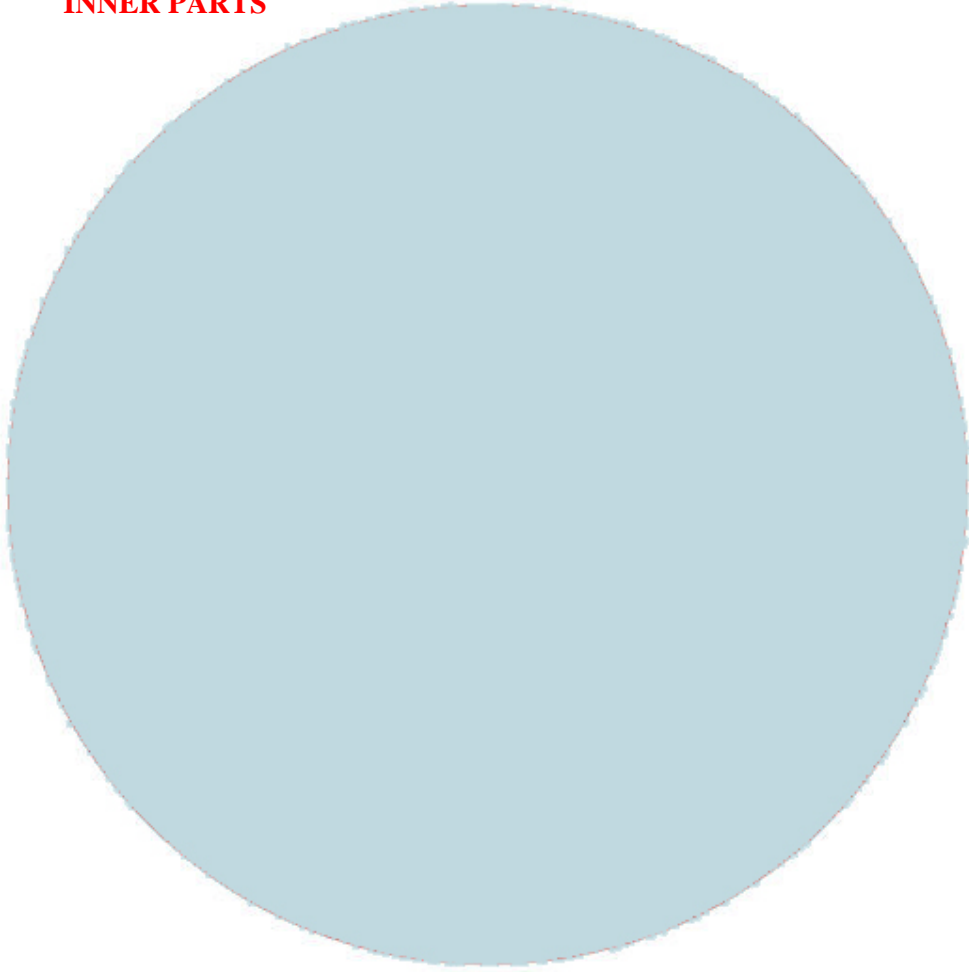
ENG: Print the templates on rigid paper (if you use normal one you need to be sure that the weight is at least 250 g in order to ensure a good result)

TOP

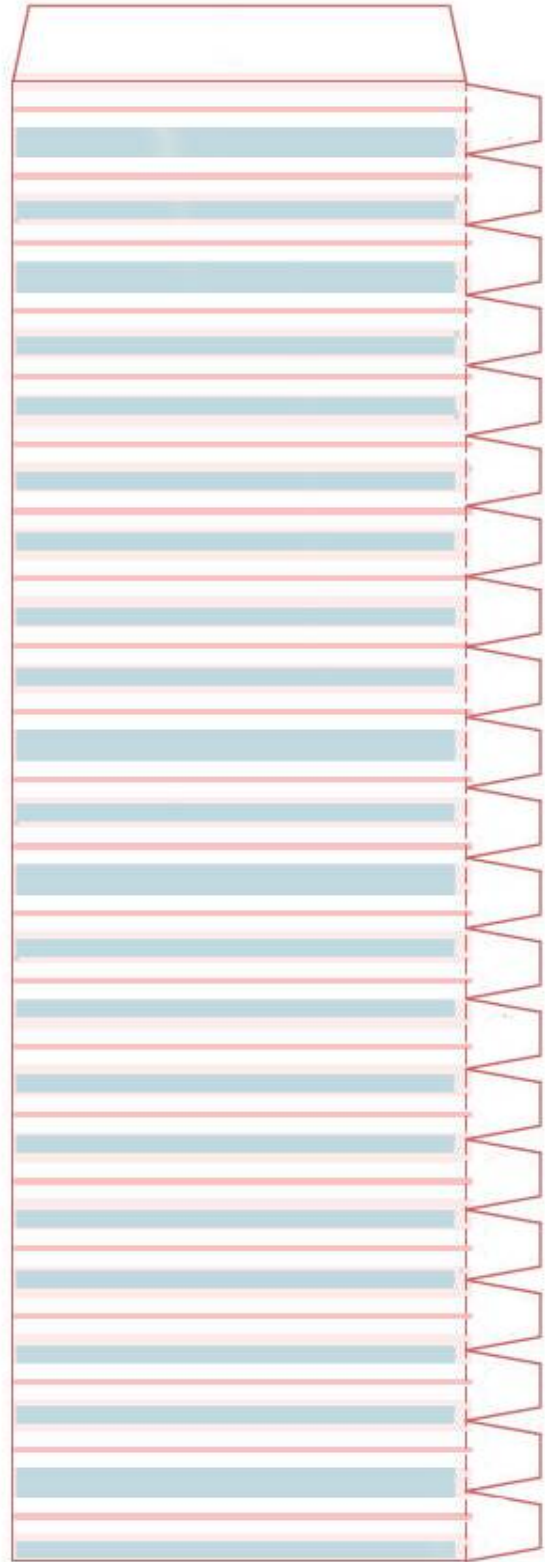
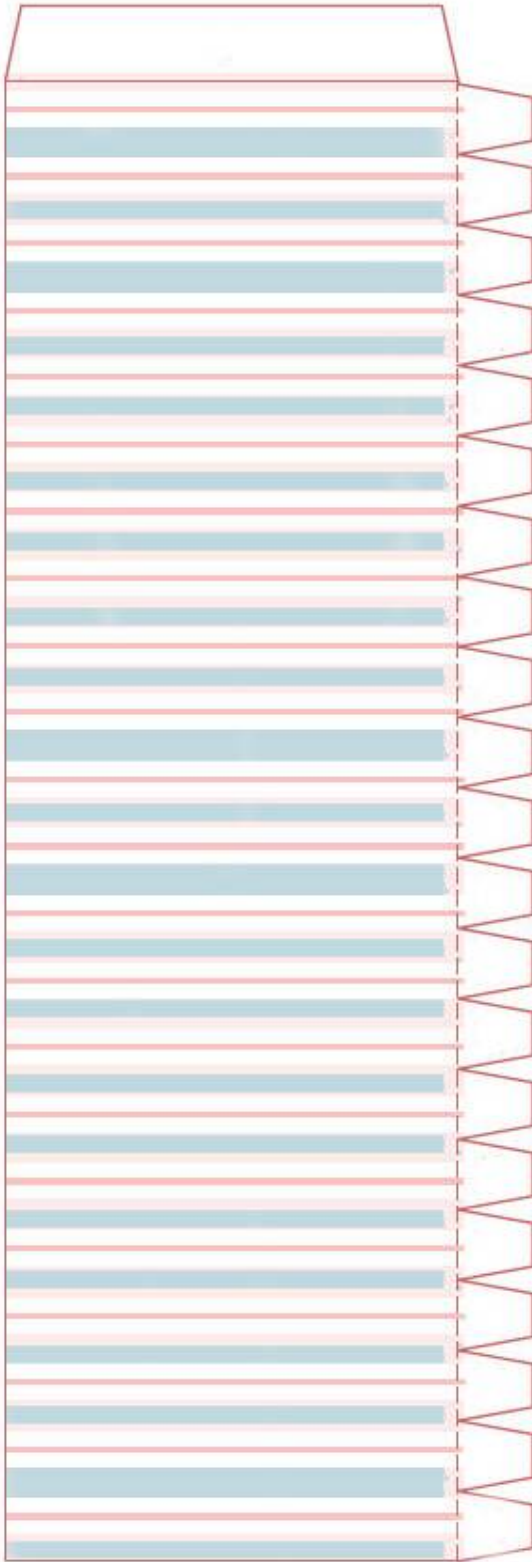


PRINT 2 COPY: 1 for base (inside part) 1 for top base (inside part)

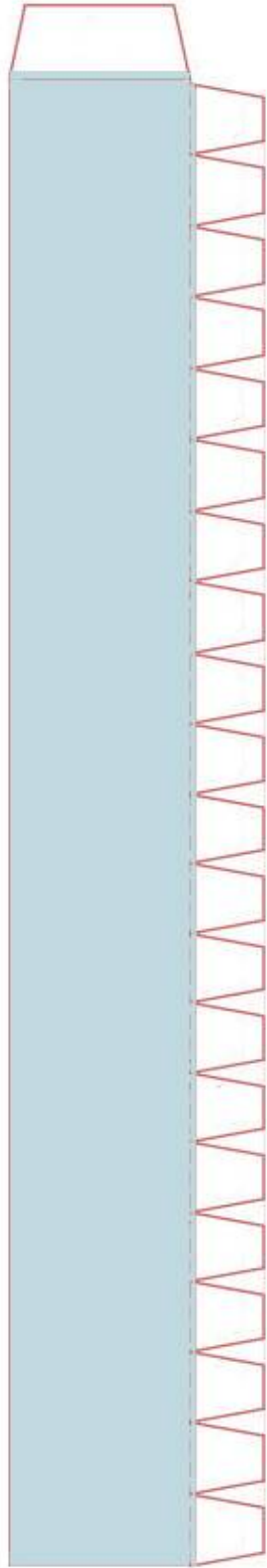
INNER PARTS



BASE SIDE BORDER



TOP SIDE BORDER



TOP: Print one time for the top of the box

